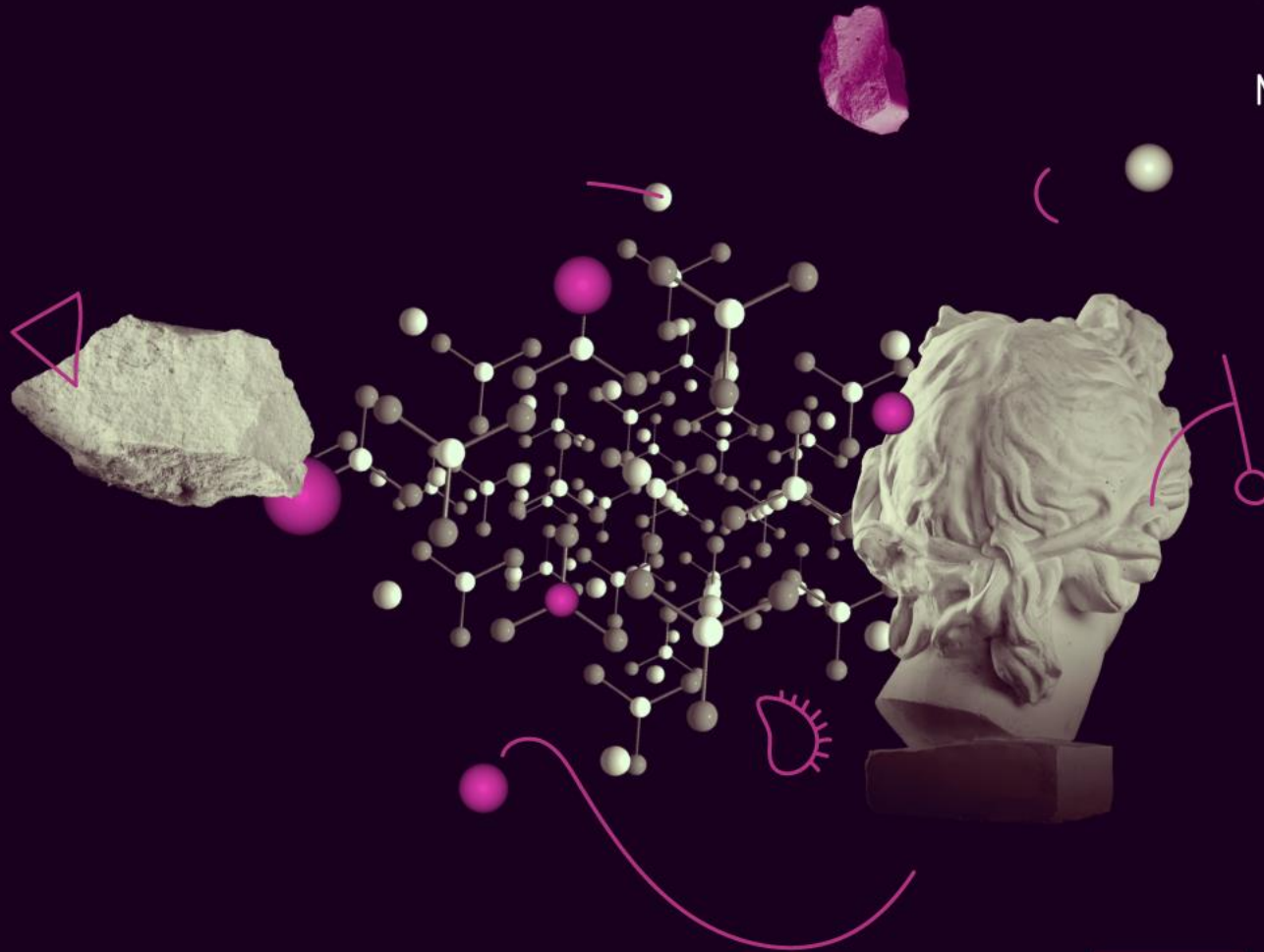




**MSCA**

Marie Skłodowska-Curie Actions

*Developing talents, advancing research*



# Opportunities for researchers

Marlène Bartès, European  
Commission

Marie Skłodowska-  
Curie Actions

# Horizon Europe

## EURATOM

### SPECIFIC PROGRAMME IMPLEMENTING HORIZON EUROPE & EIT\*

*Exclusive focus on civil applications*



#### Pillar I EXCELLENT SCIENCE

European Research Council

Marie Skłodowska-Curie

Research Infrastructures



#### Pillar II GLOBAL CHALLENGES & EUROPEAN INDUSTRIAL COMPETITIVENESS

Clusters

- Health
- Culture, Creativity & Inclusive Society
- Civil Security for Society
- Digital, Industry & Space
- Climate, Energy & Mobility
- Food, Bioeconomy, Natural Resources, Agriculture & Environment

Joint Research Centre



#### Pillar III INNOVATIVE EUROPE

European Innovation  
Council

European Innovation  
Ecosystems

European Institute of  
Innovation & Technology\*

### WIDENING PARTICIPATION AND STRENGTHENING THE EUROPEAN RESEARCH AREA

Widening participation & spreading excellence

Reforming & Enhancing the European R&I system

Fusion

Fission

Joint  
Research  
Center

2021-2027

**Budget: EUR 95.5 billion**

# Pillar I: Excellent Science

Reinforcing and extending the excellence of the Union's science base

## European Research Council

Frontier research by the best researchers and their teams

€16 billion

## Marie Skłodowska Curie Actions

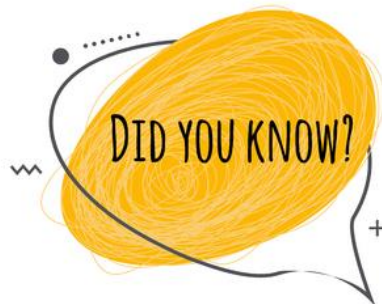
Equipping researchers with new knowledge and skills through mobility and training

€6.6 billion

## Research Infrastructures

Integrated and inter-connected world-class research infrastructures

€2.4 billion



12 Nobel Prize winners either backed by or involved in the Marie Skłodowska-Curie Actions between 2012 and 2020



# The MSCA have **5** main actions

## Doctoral Networks

**implement doctoral programmes** (including joint doctorates and industrial doctorates) **by international partnerships** of organisations from different sectors. They train highly-skilled doctoral candidates, stimulate their creativity, enhance their innovation capacities and boost their employability in the long-term.

## Postdoctoral Fellowships

**support researchers' careers and foster excellence in research and innovation.** Researchers holding a PhD can carry out their research activities, acquire new skills and develop their careers abroad, whilst developing competences in non-academic sectors and working within interdisciplinary teams.

## Staff Exchanges

**encourage short-term international and inter-sectoral exchanges of research and innovation staff** through sustainable, collaborative projects in Europe and beyond. By doing so, they enhance knowledge and skills transfer and increase organisations' research and innovation capacities.

## MSCA and Citizens

**brings research and researchers closer to children, families and the public at large** through the European Researchers' Night - the annual research communication and promotion event taking place at the end of September across EU Member States and Horizon Europe Associated Countries.

## COFUND

**co-finances regional, national and international doctoral and postdoctoral programmes for researchers' training and career development.** The COFUND action spreads MSCA's best practices by setting high standards and excellent working conditions, and boosts training and international, interdisciplinary and inter-sectoral mobility.

[Home | Marie Skłodowska-Curie Actions \(europa.eu\)](https://europea.eu)

CLICK HERE



# Key features



**Researchers' training, skills and career development (all stages of career)**



**Excellent research in all domains (bottom-up approach)**



**International, cross-sectoral & interdisciplinary mobility**



**Attractive working and employment conditions**

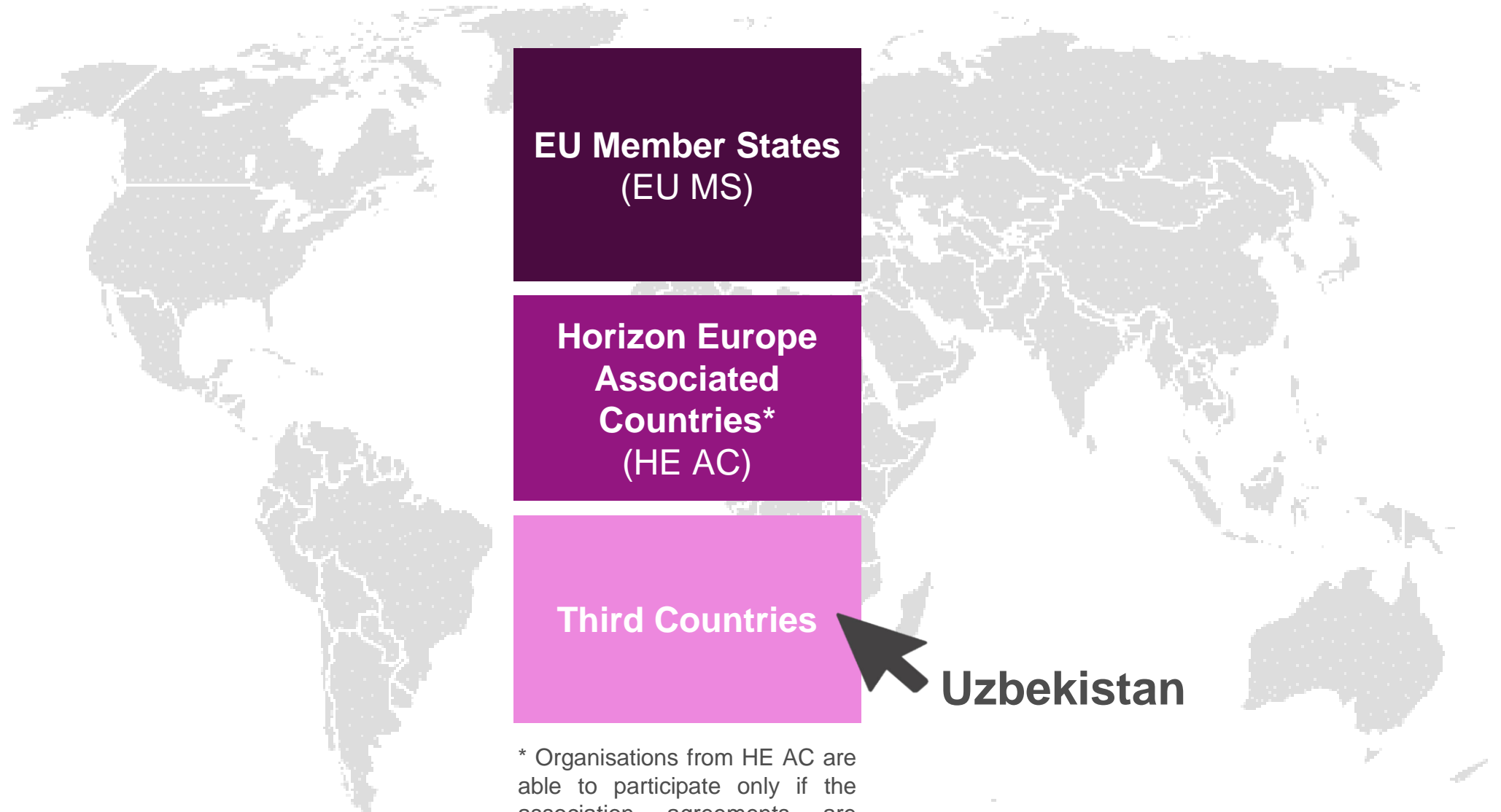


**Structuring impact on organisations through excellent programmes**



**Strong collaboration beyond academia**

# Some terminology



**EU Member States  
(EU MS)**

**Horizon Europe  
Associated  
Countries\*  
(HE AC)**

**Third Countries**

**Uzbekistan**

\* Organisations from HE AC are able to participate only if the association agreements are officially adopted before the grants are signed

# Organisation vs individual



## Organisation

- Legal entity
- From academic or non-academic sector
- Beneficiary or associated partner



## Individual researcher

- Any nationality (with additional conditions in some cases)
- Specific conditions (mobility rule; PhD obtained for actions targeting postdocs; PhD to be obtained for actions targeting doctoral candidates)

# Are you an individual

interested in doing a PhD?

already holding a PhD and looking for postdoc opportunities?





# Participation of third country individuals

Individuals from third countries can participate in all MSCA actions

<b>MSCA Action</b>	<b>Eligible</b>	<b>Where to look for vacancies</b>
Doctoral Networks	Yes	EURAXESS
Staff Exchanges	Yes	Sending institution
Postdoctoral Fellowships	Yes	Find host organisation / EURAXESS
COFUND	Yes	EURAXESS



Ready for a new  
OPPORTUNITY ?

APPLICATION CAREER  
GOAL GRADUATION QUALIFICATION SEARCH  
CAREER GOAL INTERVIEW SEARCH APPLICATION  
**JOB SEARCH**

QUALIFICATION APPLICATION CAREER GOAL  
SEARCH GRADUATION INTERVIEW QUALIFICATION GRADUATION  
GOAL

JOB OFFERS

FUNDING &  
HOSTING OFFERS

WORKING  
ENVIRONMENT

## Search for jobs and post your offer!

Take advantage of EURAXESS and find your job in research. EURAXESS lists thousands of vacancies and fellowships from more than 40 European countries and other regions in the world.

Find talented and experienced staff at the click of a button.

## Job Offers

<https://euraxess.ec.europa.eu/jobs>

CLICK HERE



Look for available  
positions on the  
EURAXESS Job Portal

PhD & postdoc positions  
in Europe and beyond!

Filter according to your choice

## Search for jobs

Enter keywords

RESEARCH FIELD

RESEARCHER PROFILE

SECTOR

COUNTRY

EUROPEAN RESEARCH PROGRAMME

1 selected

SEARCH

NEED HELP?

- H2020 / ERC (101)
- H2020 / Marie Skłodowska-Curie Actions (49)
- H2020 / Marie Skłodowska-Curie Actions COFUND (64)
- HE (8)
- HE / EIT (3)
- HE / ERC (4)
- HE / MSCA (1)
- Not funded by an EU programme (7957)

# Your search results (49)

Selected:

H2020 / Marie Skłodowska-Curie Actions ×

FILTER BY

SORT BY

SAVE JOB SEARCH LIST

23/11/2021



## Innovation and Engineering position in Paris

[READ MORE](#)

**APPLICATION DEADLINE** 31/12/2021 12:00 - Europe/Brussels  
**RESEARCH FIELD** Engineering > Electronic engineering  
**LOCATION** France  
**COMPANY/INSTITUTE** Elvsys

30/11/2021



## Early-Stage Researcher (PhD candidate) in Quantum Information Processing

[READ MORE](#)

**APPLICATION DEADLINE** 22/12/2021 17:00 - Europe/Brussels  
**RESEARCH FIELD** Computer science > Informatics  
Physics > Quantum mechanics  
Technology > Quantum technology  
**LOCATION** Poland  
**COMPANY/INSTITUTE** University of Warsaw

30/11/2021



## 4 PhD positions in the EU Horizon 2020 Marie Skłodowska-Curie Project AUTOBarge on Autonomous... (# of pos: 4)

[READ MORE](#)

**APPLICATION DEADLINE** 29/01/2022 16:07 - Europe/Brussels  
**RESEARCH FIELD** Engineering > Systems engineering  
Engineering > Electrical engineering  
Engineering > Mechanical engineering  
Engineering > Control engineering  
Engineering > Computer engineering  
**LOCATION** Multiple Locations  
**COMPANY/INSTITUTE** KU Leuven

Click on the programme and apply directly

# Who can apply to MSCA Doctoral Networks?



## Early stage researcher

- Doctoral candidate not already in possession of a doctoral degree at the date of recruitment
- No age restriction
- Any nationality



## Mobility rule

- Must not have resided or carried out their main activity (work/studies) in the country of the recruiting beneficiary for more than 12 months in the 36 months immediately before the recruitment date

# EU contribution

1 unit  
=  
1 person/month



Researcher unit cost	Institutional unit cost	
"top-up allowance"	Research, training and networking	Management and indirect costs
<b>3400€</b> (living allowance)* <b>600 €</b> (mobility allowance) <b>660 €</b> (family allowance)**	<b>1600 €</b>	<b>1200 €</b>

\* adjusted through the application of a country correction coefficient

\*\*if applicable, as well as long term leave allowance or special needs allowance

# MSCA Postdoctoral Fellowships



## Open to all domains of research

Bottom-up approach



## + 1 Host institution

For European Fellowships: Beneficiary from MS or AC

For Global Fellowships: Beneficiary + 1 associated partner from a third country, e.g. from UZ (*letter of commitment*)

## + 1 Supervisor

Senior researcher appointed at the beneficiary to supervise the researcher

# Who can apply?



## Experienced researcher (ER)

- Have obtained a PhD at the date of the call deadline
- No age restriction
- Maximum 8 years (full-time) research experience since award of the (first) doctoral degree

## Any Nationality

- Except for Global Fellowships: the researcher must be a national or long-term resident of a MS or AC (5 years)



## Mobility rule

- Must not have resided or carried out their main activity in the country of the beneficiary (for European Fellowships) or associated partner (for Global Fellowships) for more than 12 months in the 36 months immediately before the call deadline



# European Fellowship

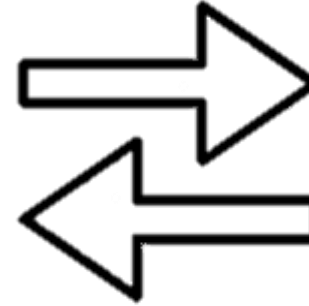
For fellows coming to  
EU MS / HE AC  
"incoming"  
or  
moving within  
EU MS / HE AC  
"intra-European"

**12-24 months**



# Global Fellowship

**12-24 months**



**12 months**

For fellows from  
Europe  
going to third  
countries  
and then  
returning to Europe

**+ 6 months**  
in non-academic  
sector in MS/AC  
(optional)

# EU contribution

1 unit  
=  
1 person/month

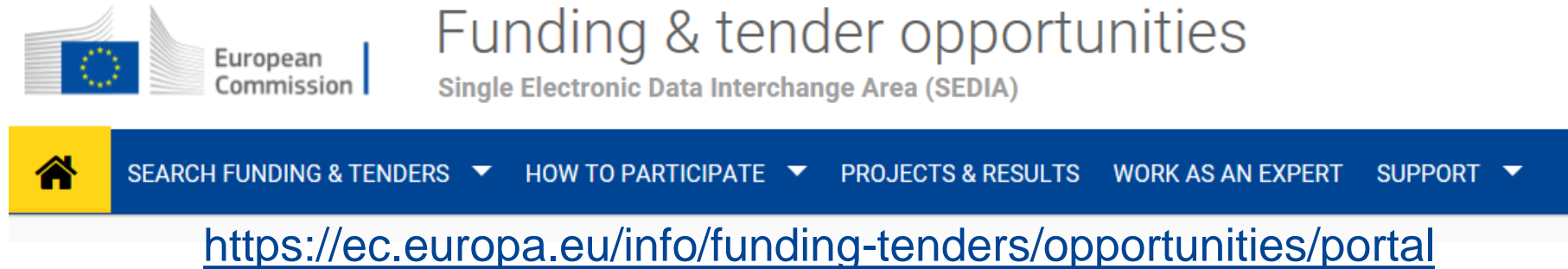


Researcher unit cost	Institutional unit cost	
"top-up allowance"	Research, training and networking	Management and indirect costs
<b>5080 €</b> (living allowance)* <b>600 €</b> (mobility allowance) <b>660 €</b> (family allowance)**	<b>1000 €</b>	<b>650 €</b>

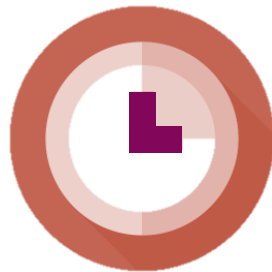
\* adjusted through the application of a country correction coefficient

\*\*if applicable, as well as long term leave allowance or special needs allowance

# Where to apply?



CLICK HERE



## Next call for applications

Opening: 13 April 2022

Closing: 14 September 2022

# Are you an organisation?



Interested in hosting a postdoc?

Interested in exchanging R&I staff?

Interested in setting up a doctoral or postdoctoral programme?

# Participation of third country organisations

Organisations from third countries can participate as:

<b>MSCA Action</b>	<b>Beneficiary</b>	<b>Associated Partner</b>
Doctoral Networks	Yes*	Yes
Staff Exchanges	No	Yes
Postdoctoral Fellowships	No	Yes
COFUND	No	Yes

\*Beneficiaries can be established in low- and middle-income non-associated countries included in the list of countries eligible for funding provided in the Horizon Europe Programme Guide

# Beneficiary vs Associated Partner



## Beneficiary

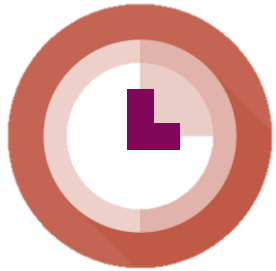
- Signs the Grant Agreement with the EU
- Minimum number and geographical requirements
- Receives funding directly



## Associated partner

- Contributes to the action (e.g. hosts staff or researchers)
- Does not directly receive funding

# MSCA Doctoral Networks



## DURATION

4 years



## COMPOSITION

Min 3 organisations  
in 3 ≠ EU MS or HE  
AC (at least 1 MS)



## FELLOWSHIP

Between 3 and 36  
months



## BUDGET

360 PM for regular DN  
540 PM for ID & JD

# EU contribution

1 unit  
=  
1 person/month



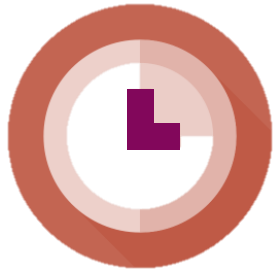
Researcher unit cost	Institutional unit cost	
"top-up allowance"	Research, training and networking	Management and indirect costs
<b>3400€</b> (living allowance)* <b>600 €</b> (mobility allowance) <b>660 €</b> (family allowance)**	<b>1600 €</b>	<b>1200 €</b>

\* adjusted through the application of a country correction coefficient

\*\*if applicable, as well as long term leave allowance or special needs allowance



# MSCA Staff Exchanges



## DURATION

4 years



## COMPOSITION

Min 3 organisations  
in 3 ≠ countries  
(min. 2 EU MS or  
HE AC)



## SECONDMENTS

1-12 months per staff



## BUDGET

Max EUR 1.6 million  
(360 PM per project)

# EU contribution

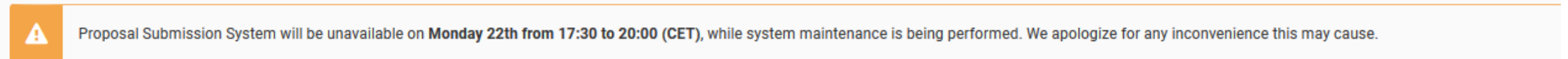
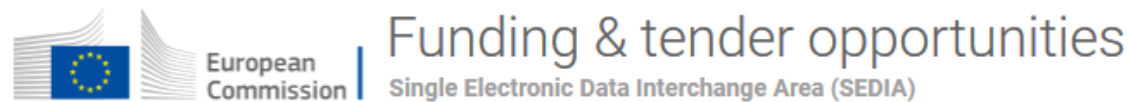


# Call calendar

Year	Action	Opening	Deadline
2021	Doctoral Networks	22 June 2021	16 November 2021
	Postdoctoral Fellowships	22 June 2021	12 October 2021
	Staff Exchanges	7 October 2021	9 March 2022
	COFUND	12 October 2021	10 February 2022
2022	Doctoral Networks	3 May 2022	15 November 2022
	Postdoctoral Fellowships	13 April 2022	14 September 2022
	Staff Exchanges	6 October 2022	8 March 2023
	COFUND	11 October 2022	9 February 2023

# Where to apply?

- All calls are published on the **Funding and Tender Opportunities Portal**
- Applications are submitted by the **coordinator** through the portal:
  - ✓ Find your call
  - ✓ Sign in to the portal and register your organisation (get a PIC number)
  - ✓ Find partners
  - ✓ Apply



## Find calls for proposals and tenders

# Key resources and guidance

Guide for Applicants

MSCA Work Programme & annexes

Proposal templates

Model Grant Agreement

Online manual on how to submit an application

Frequently Asked Questions

Funding and Tender Opportunities Portal



# Follow us



[ec.europa.eu/research/  
mariecurieactions/](https://ec.europa.eu/research/mariecurieactions/)  
MSCA Website



Marie.Curie.Actions  
Facebook



@MSCActions  
Twitter



# Thank you!

**# HorizonEU #MSCA  
@MSCAactions**

**<https://ec.europa.eu/research/mariecurieactions/>**



© European Union 2021

Unless otherwise noted the reuse of this presentation is authorised under the [CC BY 4.0](https://creativecommons.org/licenses/by/4.0/) license. For any use or reproduction of elements that are not owned by the EU, permission may need to be sought directly from the respective right holders.

Image credits: © ivector #235536634, #249868181, #251163013, #266009682, #273480523, #362422833, #241215668, #244690530, #245719946, #251163053, #252508849, 2020. Source: Stock.Adobe.com. Icons © Flaticon – all rights reserved.